



Changed City of Samjiyon



Changed City of Samjiyon

The city of Samjiyon where Paektu, the ancestral mountain of the Korean nation, soars is in Ryanggang Province in the northern inland area of Korea.

It mostly consists of mountainous districts, which rise 1 300 metres above sea level on average.

With the annual mean temperature of 0.6°C below zero, it is one of the coldest regions in the country.

Until the 1960s it had been a secluded mountain community with poorly-shaped log cabins all around.

In the 1970s, under the leadership of the Workers' Party of Korea new streets went up along with public buildings and dwelling houses, leaving no vestiges of the outmoded things, and in the 2000s another facelift was made.

In recent years the city has undergone a sea change.

The respected Comrade Kim Jong Un initiated the plan of renovating the city of Samjiyon and inspected the project sites several times, giving guidance to develop it into a modern mountain

city that can represent the civilization in the era of the WPK.

As a result, in 2019 the seat of the city was built as befits a cultured mountain city which epitomizes modern civilization, and two years later all the rural communities as well as mountain villages in the city changed into ideal places for the people.

New standards were established, ranging from the formation of a city as a whole to each structure, road and illumination. A landscape was created on a high level with parks ubiquitous in the city, which accords well with the features of the northern alpine region.

With a good combination of the national character, modern quality and inherent characteristics of the locality achieved and all its structures made practical, diversified and high in the formative art, the city serves as a standard mountain city of high cultural qualities and a model regional city.

The Workers' Party of Korea's plan to develop the whole country into a socialist fairyland and thus provide the people with an affluent and civilized life has begun to develop into reality with the city project as the beginning.

The seat of the city consists of Kwangmyongsong-dong, Pegaebong-dong and Ikkal-dong, which are connected by Ponnamu, Milyong, Chongbong, Rimyongsu, Motka and Pegaebong streets.









Some of the apartments in Samjiyon



















Kindergartens and schools in the city are in good educational conditions, and a schoolchildren's palace and a children's camp are also to be found.





Kwangmyongsong Primary School



Kwangmyongsong Technical Senior Middle School



Samjiyon Schoolchildren's Palace



Samjiyon Children's Camp



The Samjiyon City Hospital is equipped with all the necessary conditions for prompt and accurate diagnosis and treatment.





Part of the Samjiyon City Hospital



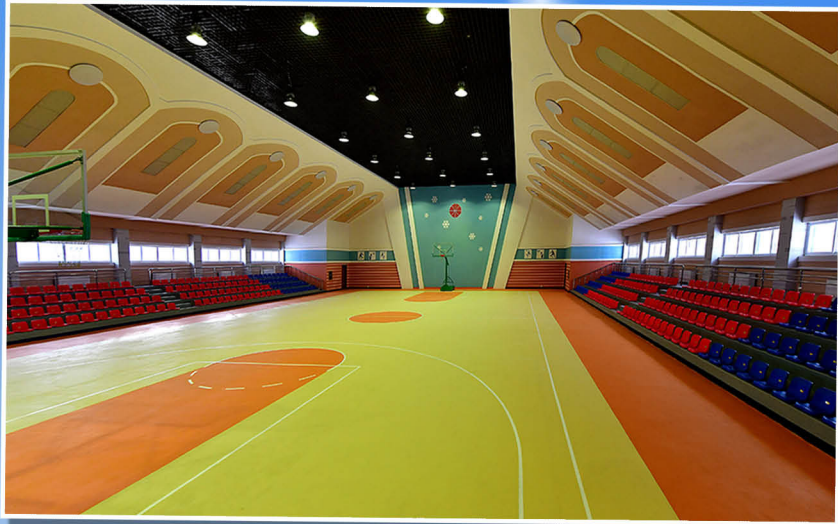
The Paektusan Area Sports Village in the city is well laid out for skiing, futsal, ice hockey and other sports events.





Pegaebong Ski Resort





Samjiyon City Gymnasium



Ice Hockey
Gymnasium



Pegaebong Noodle House

There are the Pegaebong Noodle House, Potato Restaurant and other service facilities in the seat of the city.



Korean Restaurant



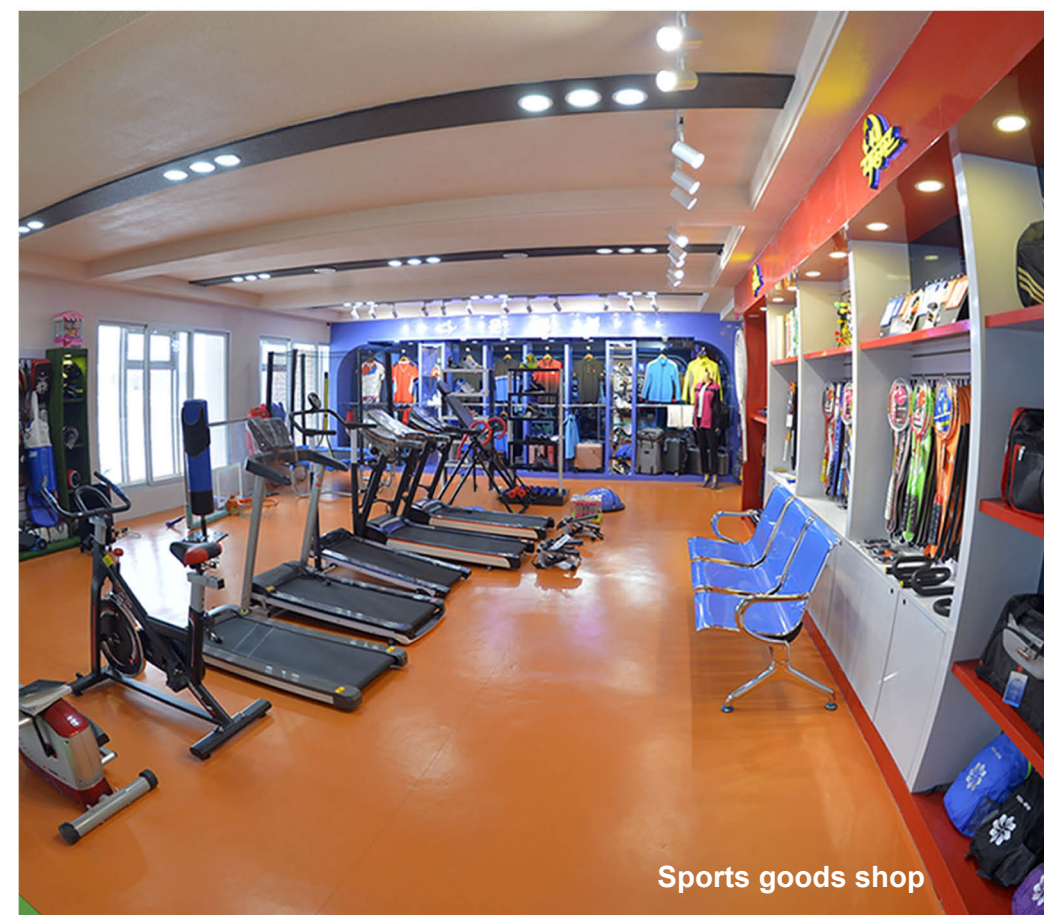
Potato Restaurant



Yokjon Tea House



Samjiyon General Store



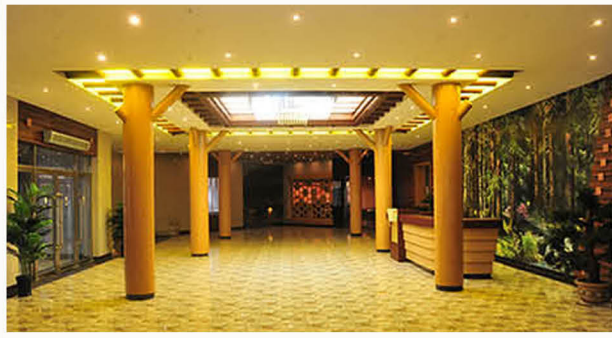
Sports goods shop

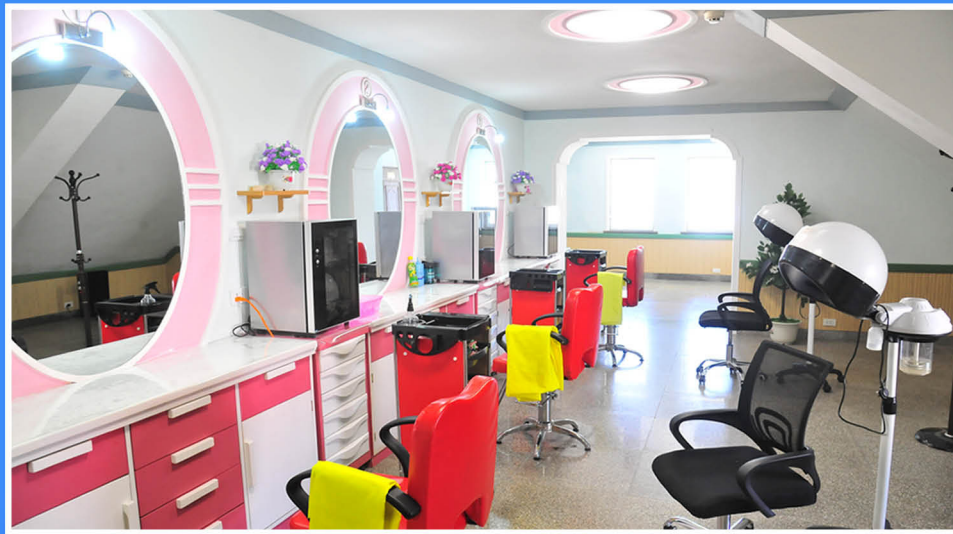
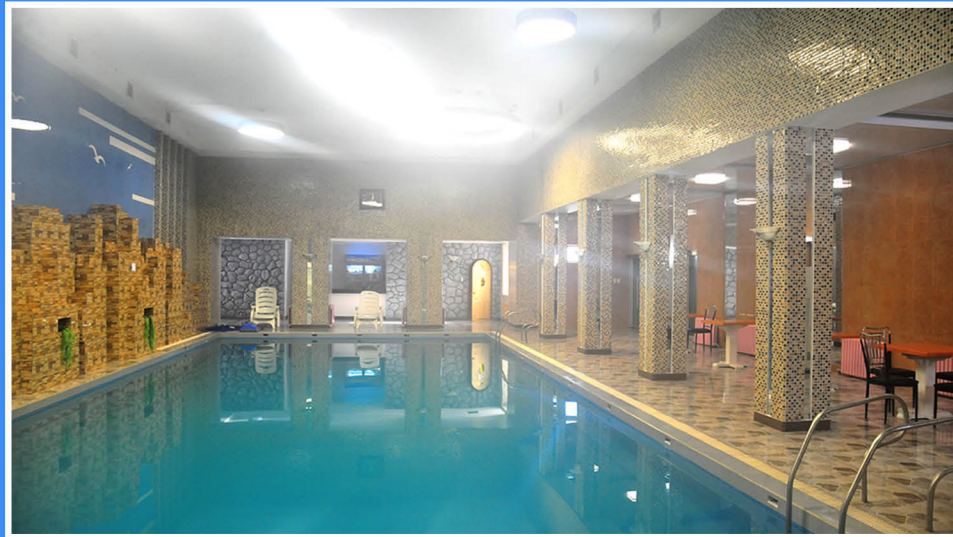
Flower and goldfish shop



Grocery

Rehabilitation centre





Chonji Health Complex



Millim Health Complex



Also to be found in the city are lodgings for the visitors to the revolutionary battle sites in the Paektusan area.





People on a visit to revolutionary battle sites in the Paektusan area, including the Grand Samjiyon Monument

In the city there are local industry factories and farms like the Samjiyon Potato Farina Factory with an annual production capacity of thousands of tons, the Samjiyon Bog Bilberry Drink Factory, which produces different kinds of foodstuffs with bog bilberry, a specialty of the province, and the Junghung Farm, an epitome of rural rejuvenation, under the Samjiyon City Agricultural Management Committee.



Samjiyon Potato Farina Factory







Samjiyon Bog Bilberry Drink Factory



Samjiyon Bean Paste and Soy Sauce Factory



Samjiyon Bog Bilberry Tissue Culture Farm



Samjiyon City Greenhouse Farm



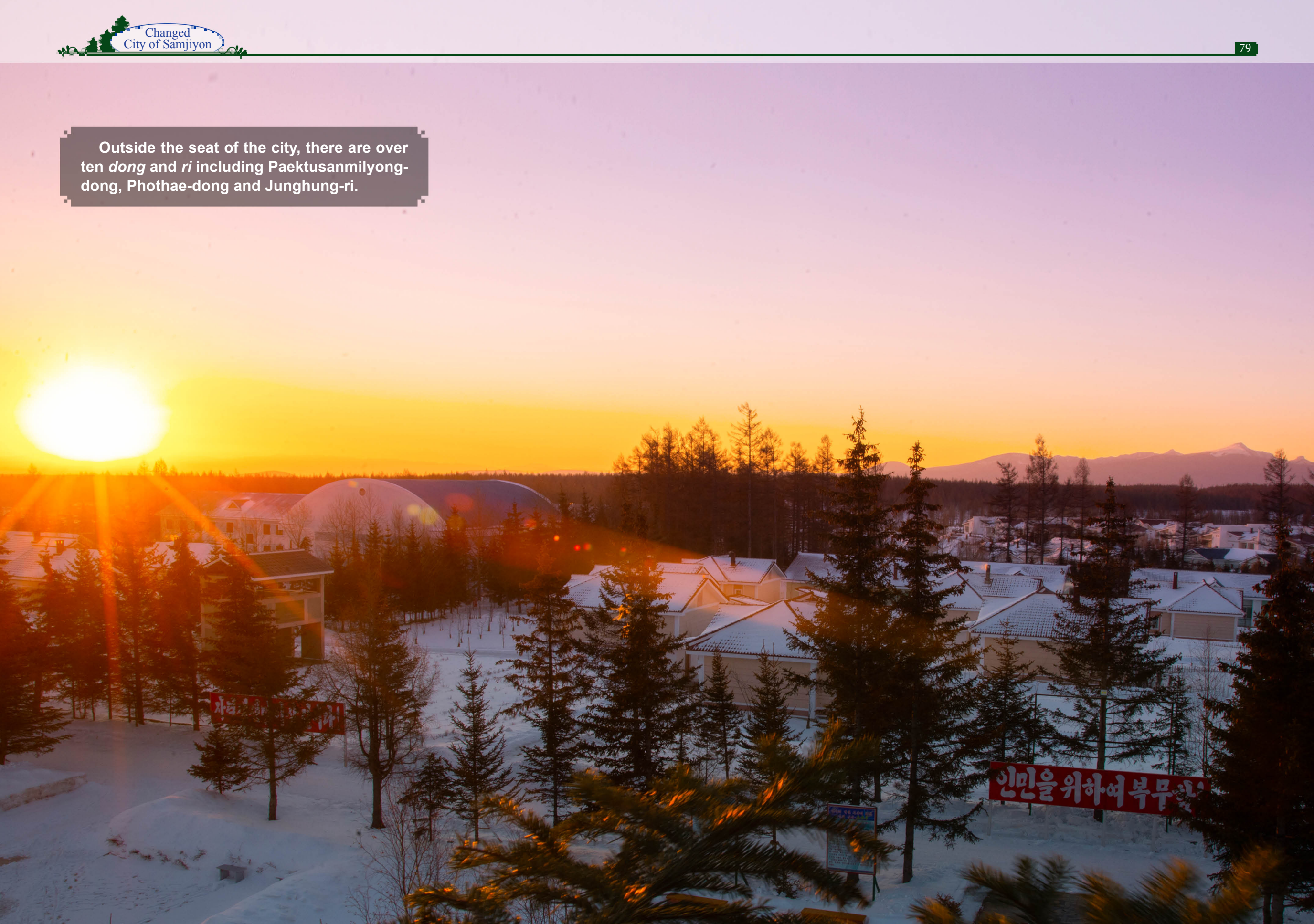


**Junghung Farm under the Samjiyon City
Agricultural Management Committee**





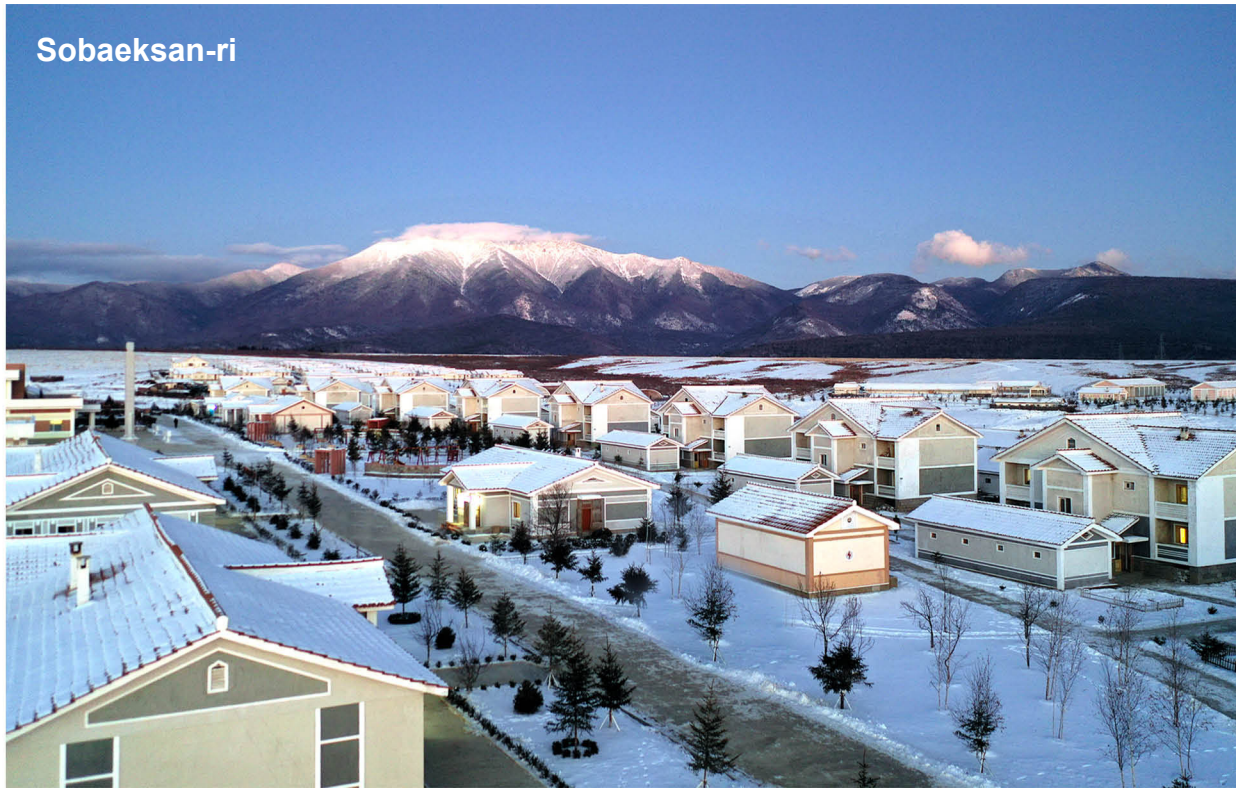
Outside the seat of the city, there are over ten *dong* and *ri* including Paektusanmilyong-dong, Phothae-dong and Junghung-ri.



Paektusanmilyong-dong



Sobaeksan-ri



Poso-ri



Phothae-dong



The city sponsors an ice sculpture festival, fireworks display and other colourful functions on the Day of the Shining Star and other major anniversaries.





Changed City of Samjiyon

Edited by Choe Myong Guk

Written by Rim Ok

Translated by Ri Sun Chol

Photographs by Kim Song Chol,
Kim Hyok Chol, Song Tae Hyok,
Hong Kwang Nam, Ra Phyong Ryol
and An Chol Ryong

Published by Foreign Languages
Publishing House

Issued in December Juche 111 (2022)



Foreign Languages Publishing House, DPRK
Juche 111 (2022)

