

Myohyangsan Medical Appliances Factory



Foreign Languages Publishing House, DPRK
Juche 110 (2021)

Myohyangsan Medical Appliances Factory



Introduction

The Myohyangsan Medical Appliances Factory located in Hyangsan County, North Phyongan Province of the Democratic People's Republic of Korea, was inaugurated in April 1972 and is widely known across the country as a producer of quality medical appliances conducive to health promotion of the Korean people.

President Kim Il Sung personally selected the site for the factory at the foot of Mt Myohyang, a celebrated mountain in Korea, and named it the Myohyangsan Medical Appliances Factory.

General Secretary Kim Jong Un of the Workers' Party of Korea visited the factory in August 2018 and instructed that it should be reconstructed on a modern basis as required by the developing times. He visited the factory under reconstruction in October 2019 to indicate detailed ways and means for producing advanced medical appliances by fixing correct qualitative indices in keeping with the worldwide trend of development and as suited to the constitutional characteristics of the Korean people.

Thanks to the reconstruction project completed in 2020, the Myohyangsan Medical Appliances Factory has established an integrated manufacturing system based on up-to-date technical means and put the production lines on a modern and IT footing.

It turns out scores of medical appliances and instruments for medical treatment and surgical operation in line with the international standards, including universal chairs for dental and ENT treatment, delivery beds, multi-purpose operating tables, and abdominal operating apparatuses.

There are workshops for medical appliances, sheet-metal processing, razor blades and assembling, general moulding workteam, and departments of technical affairs. The factory has a comprehensive structure capable of designing and manufacturing medical appliances, and turns out latest medical appliances and equipment in close collaboration with cooperative production units.

**MEDICAL
APPLIANCES
WORKSHOP**

**SHEET-METAL
PROCESSING
WORKSHOP**

**GENERAL
MOULDING
WORKTEAM**

**RAZOR BLADE
WORKSHOP**

**ASSEMBLING
WORKSHOP**

... ..



The factory has provided ample conditions for preventing contamination and ensuring hygienic safety and built its production environment to conform to the international standards.





Strategy for Business Development

The factory gives priority to raising the scientific and technological level of the employees in putting production on a normal footing and improving the quality of products. Its workers are learning modern science and technology and professional knowledge while receiving online lectures at the sci-tech learning space furnished in the factory.

Many young and competent personnel, who have graduated from the distance education colleges of Kim Il Sung University, Kim Chaek University of Technology and other renowned universities, are playing a big role in revitalizing the production.

Students of the factory's vocational school are perfecting their technical abilities at production sites.



Integrated Production Control Room



Production >>>

Medical appliances workshop

General moulding workshop

Assembling workshop

Sheet-metal processing workshop

Razor blade workshop





Medical Appliances Workshop

복합가공유연세포
RMT-60

The workshop is equipped with CNC machines and other modern facilities for primary processing, precision processing and electronic parts assembling. It turns out mechanical parts of medical appliances.

Flexible manufacturing cells for complex processing are formed based on the six-degree-of-freedom joint robots and converting tools, thus making several production lines automated and unmanned.

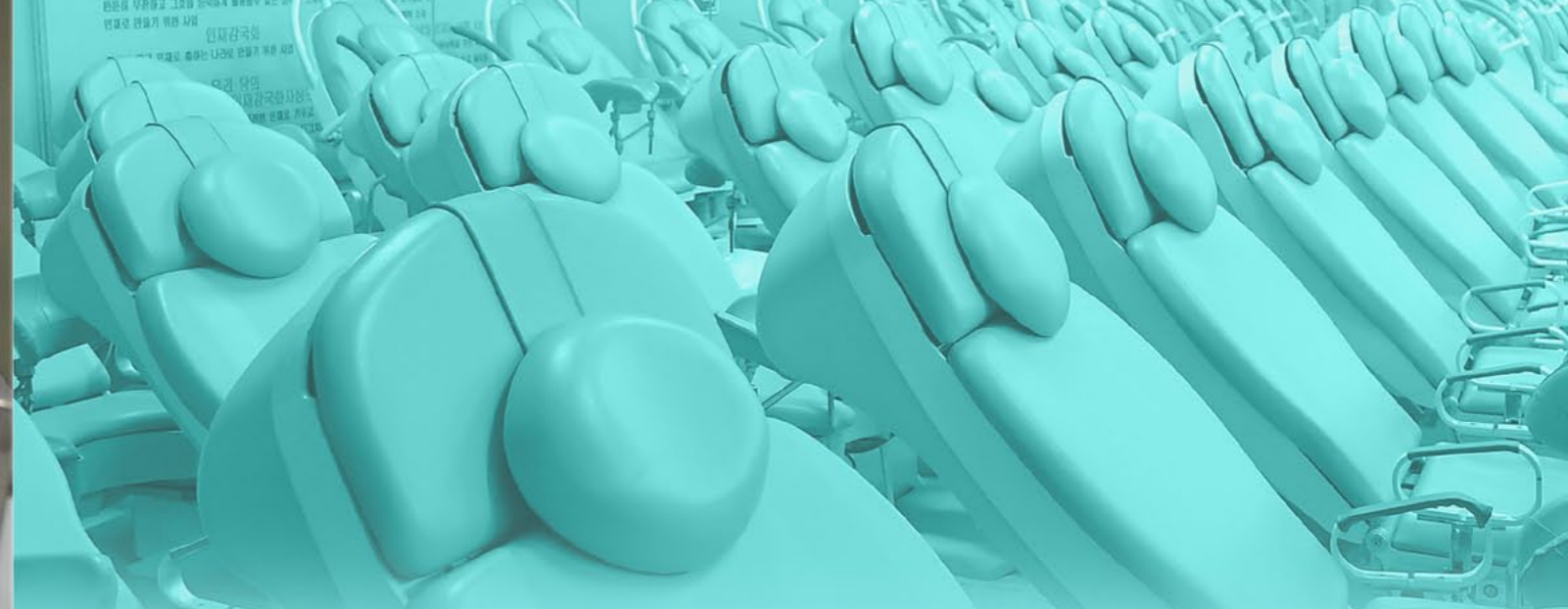
연하기계

복합가공유연세포
RMT-25



Sheet-metal Processing Workshop

The workshop has latest machines and facilities, including laser cutters, CNC bending machines, plastic injection moulding machines, and vacuum forming machines, and turns out metal and plastic parts for external forms of medical appliances, which are of high quality and good-looking.



The fittings needed for the medical appliances are produced at the general moulding workteam through the processes of urethane foam making, coating, painting and heat treatment.

General Moulding Workteam



Assembling Workshop

Semi-finished goods from the preceding processes are sent to the workshop to be assembled in the flow-lined process.

Finished medical appliances undergo quality inspection and are forwarded.



Automatic Warehouse

The automatic warehouse is inside the assembling workshop to store semi-finished goods.

Desired items are taken out of the warehouse by remote control and transported by unmanned carts to designated spots.



Razor Blade Workshop

The razor blade workshop produces Myohyangsan-brand razor blades and measuring tapes.



Products

Universal
dentist's chair



Universal chair for
ENT treatment



Consulting bed



Trolley for operating theatre



Patient's bed



Aspirator



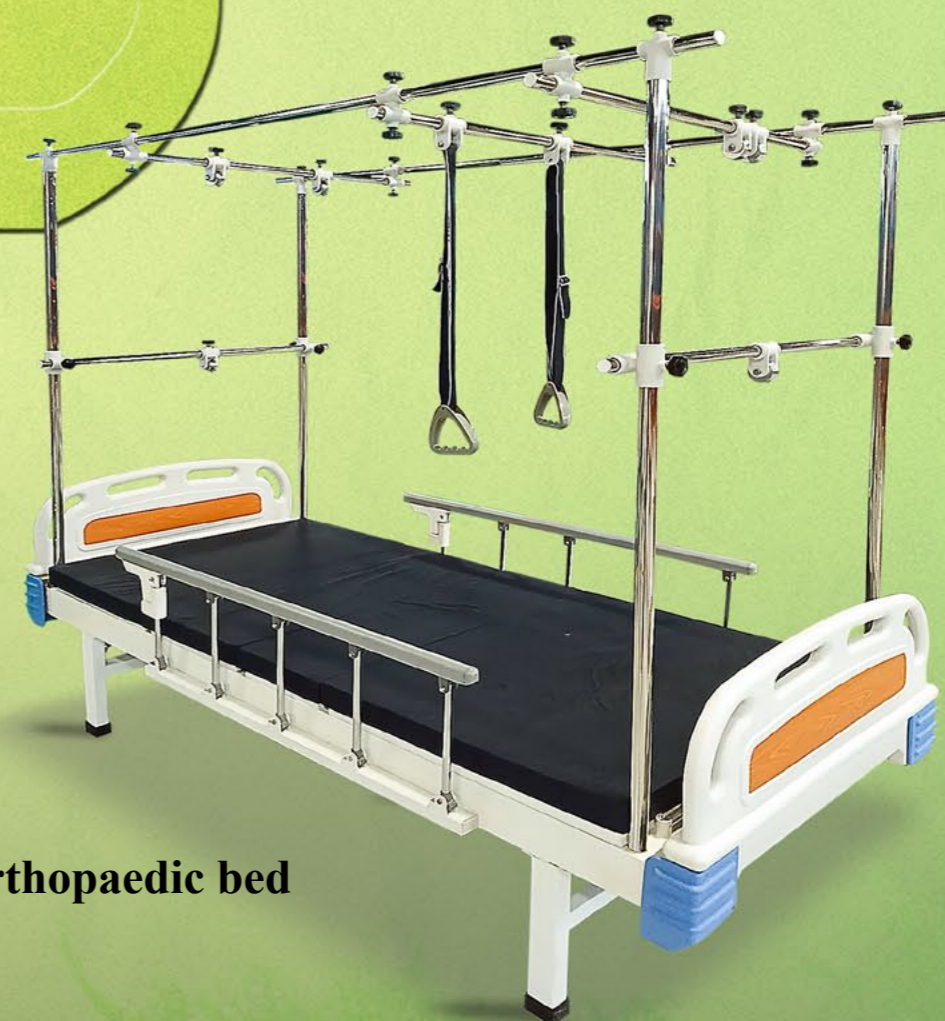
Centrifuge



Delivery bed



Consulting bed for ladies



Orthopaedic bed

Hospital trolley



Operating table



Metal equipment





The medical appliances of the factory are supplied to many hospitals of the country.





Myohyangsan Medical Appliances Factory

Edited and written by Kim Kwang Chol
Photographed by Kong Yu Il, Song Tae Hyok

Published by the Foreign Languages Publishing House
Issued in June Juche 110 (2021)

